

## How To Apply:

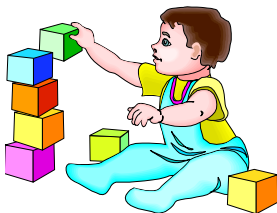
Stop by the local center to pick up an application. You will need copies of the following documents:

- Immunization Record
- Child's birth certificate
- Proof of income (tax return)

**OR**

Contact the Tucumcari Office at  
(575) 461-1914 or email

[headstart@epcaa.org](mailto:headstart@epcaa.org).



### Head Start Locations

Anton Chico Bridge Street Anton Chico, NM 87711 575-427-8080	Clayton Head Start 125 N. Fifth Ave. Clayton, NM 88415 575-374-8095
Clovis Head Start 901 N. MLK Blvd. Clovis, NM 88101 575-762-5585	Ft. Sumner Head Start 1001 Sumner Blvd. Fort Sumner, NM 88119 575-355-2445
Portales Head Start 501 East First St. Portales, NM 88130 575-356-8712	Santa Rosa Head Start 658 South Fifth St. Santa Rosa, NM 88435 575-472-3196
Tucumcari Head Start 210 West Center Tucumcari, NM 88401 575-461-1914	

### Early Head Start Locations

Clovis Early Head Start 901 N. Martin Luther King Blvd Clovis, NM 88101 (575) 762-5585
Portales Early Head Start 1400 S. Ave D Suite B Portales, NM 88130 (575) 356-6038
Tucumcari Early Head Start 1608 S. Rock Island Street Tucumcari, NM 88401

**Eastern Plains C.A.A., Inc. Head Start  
Central Office**  
210 W. Center St.  
P.O. Box 1244  
Tucumcari, NM 88401

Phone: (575) 461-1914 (Ext. 200 or 206)

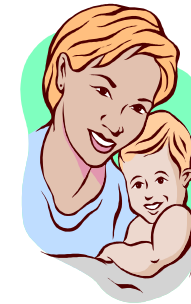
Fax: (575) 461-6526

Email: [headstart@epcaa.org](mailto:headstart@epcaa.org)

Web: <http://www.epcaa.org/headstart.html>



# Eastern Plains C.A.A., Inc.



## Early Head Start

Pregnant  
Women  
&  
Infants  
6 Weeks to  
Age 3

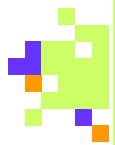


## Head Start Preschool

Ages 3 to 5



Teaching Children—Reaching Families

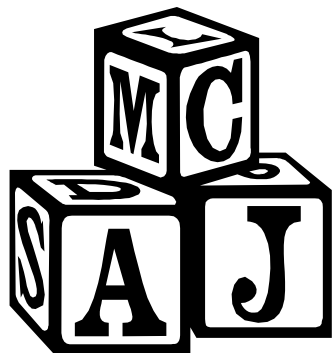


## What is Early Head Start AND Head Start?

Early Head Start and Head Start is a federally funded comprehensive program for pregnant women, infants, toddlers and preschoolers of low income families.

Its purpose is to support children's physical, social—emotional and cognitive development.

The program assists families with information on parenting skills and helps parents move towards self-sufficiency. The program also provides special services for children with disabilities.



Eastern Plains Head Start pre-school services are provided to children in a classroom setting (Center Base). Early Head Start services are provided in both a classroom setting (Center Base) and/or through regularly-scheduled home visits (Home Base).

### Center Base Services Include:

- EHS -Quality Child Care
- HS Pre-School—Comprehensive Program with an emphasis on school readiness
- Screening & Assessments for All Children Enrolled
- Special services for the Disabled
- Parent Education
- Family Partnership Process
- Child Development Training
- Low Teacher-Child Ratios

### Home Base Services for Early Head Start Include:

- Weekly Home Visits
- Parent Education
- Child Development Training
- Socialization Twice a Month
- Family Partnership Process
- Screenings & Assessments
- Special services for the Disabled

## Parent Involvement

Eastern Plains Head Start/Early Head Start staff works with parents in partnership to establish goals for their children and family. We support parents as they go through the parenting process and recognize ***THAT THE PARENT IS THEIR CHILD'S FIRST TEACHER.***

Parents are encouraged to participate in all aspects of our program:

- As volunteers
- As a voice in program governance
- As members of the local Parent Committee and Policy Council

